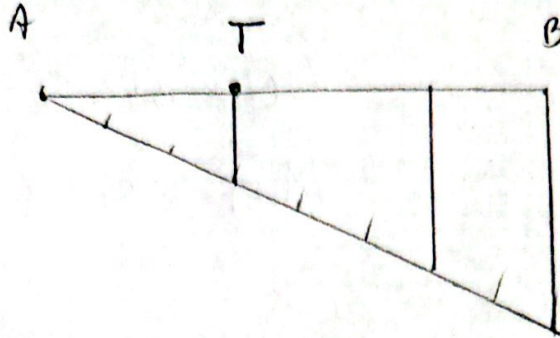


REŠITVE POWERPOINTA (19. 1.)

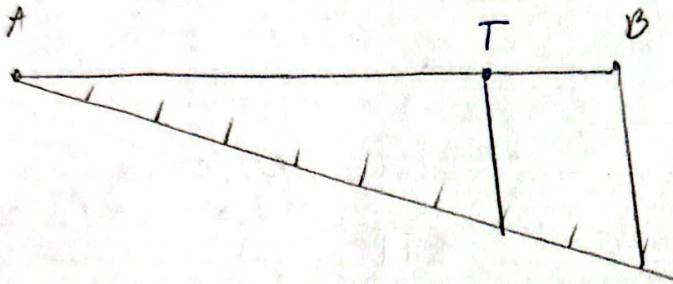
1. KAZIČELIS PALICO (preprosto)

2



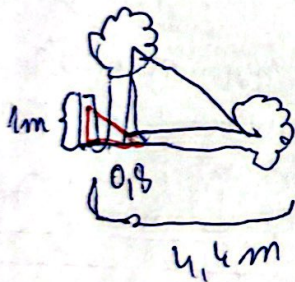
$$|AT| : |TB| = 3 : 5$$

3



$$|AT| : |TB| = 7 : 2$$

4



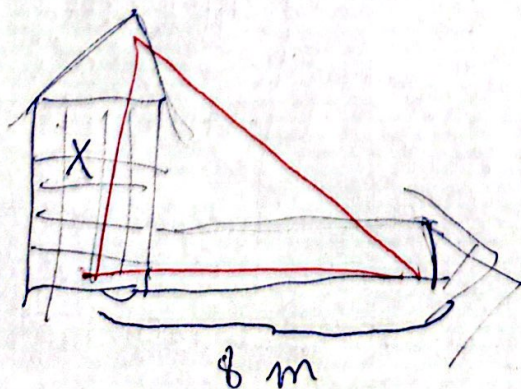
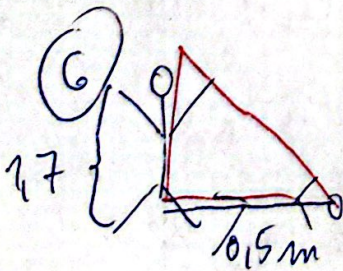
$$0,8 : 1 = 4,4 : x$$

$$4,4 = 0,8x$$

$$x = \frac{4,4}{0,8} = 5,5 \text{ m visoko drevo}$$

5. $2,8 : 4,2 = 6,2 : 9,3 \rightarrow$ MORA VOLTATI RAZMEREJE
 $28 : 42 = 62 : 93 (: 31)$
 $4 : 6 = 2 : 3$
 $2 : 3 = 2 : 3 \checkmark$ SIA VZPORSODNI

6



$$0,5 : x = 0,5 : 1,7$$

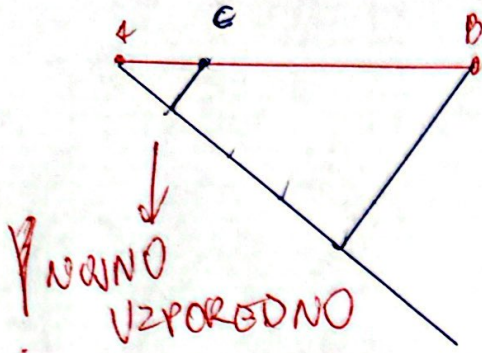
$$0,5x = 8 \cdot 1,7$$

$$x = \frac{8 \cdot 1,7}{0,5}$$

$$x = \frac{13,6}{0,5}$$

$$x = \frac{136}{5} = \underline{\underline{27,2 \text{ m}}}$$

⑥ Risaune daljice \vee (merilo, $|AB|=5\text{cm}$ \times $|AB|:|AC|=4:1$
 pazi na koliko delov jo razdeli \bar{s} \downarrow
 AB na 4 dele



$$|AC|:|CB|=1:3$$

$$|AB|:|CB|=4:3$$

⑦ Naloge o starosti

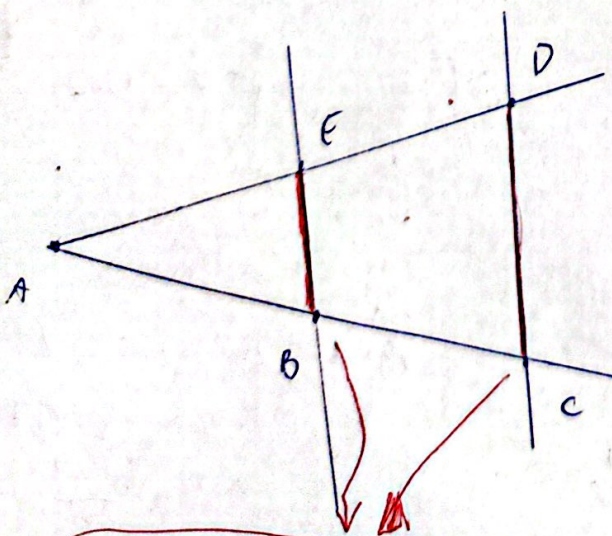
PRBGLGDNI/CA

	DANES	PRED/ČEZ X LET
MATI	30	$30 - 1/x$
SIN	10	$10 - 1/x$

nastavi enacbo
 izračunaj in NE POZABI

ODGOVOR

⑧ Talesov izrek



2 podobna trikotnika
 1. TALESOV $\Delta ABE \sim \Delta ACD$

$$|AB|:|BC| = |AE|:|ED|$$

ali

$$|AB|:|AC| = |AE|:|AD|$$

ali

$$|AB|:|AE| = |AC|:|ED|$$

ali

$$|AB|:|AE| = |BC|:|ED|$$

2. TALESOV

$$|AB|:|AC| = |BE|:|CD|$$

$$|AE|:|AD| = |BE|:|CD|$$

A ABC

$a = 6 \text{ cm}$

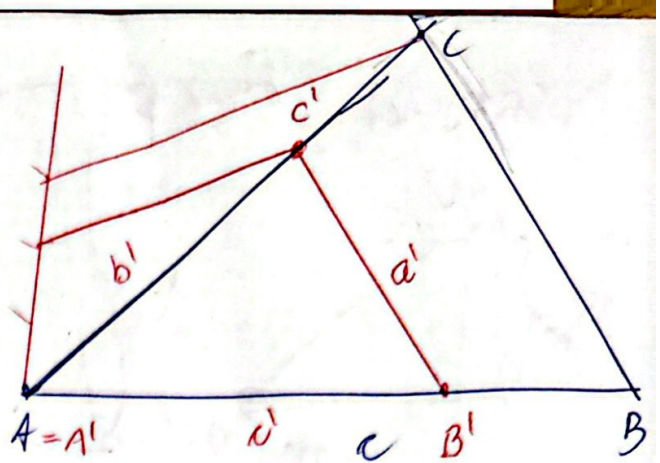
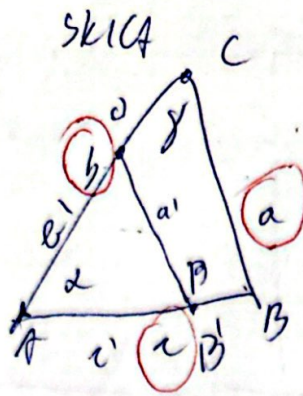
$b = 8 \text{ cm}$

$c = 9 \text{ cm}$

$b' : b = 2 : 3$

b' - MANJŠI

b - 3. dele



A ABC

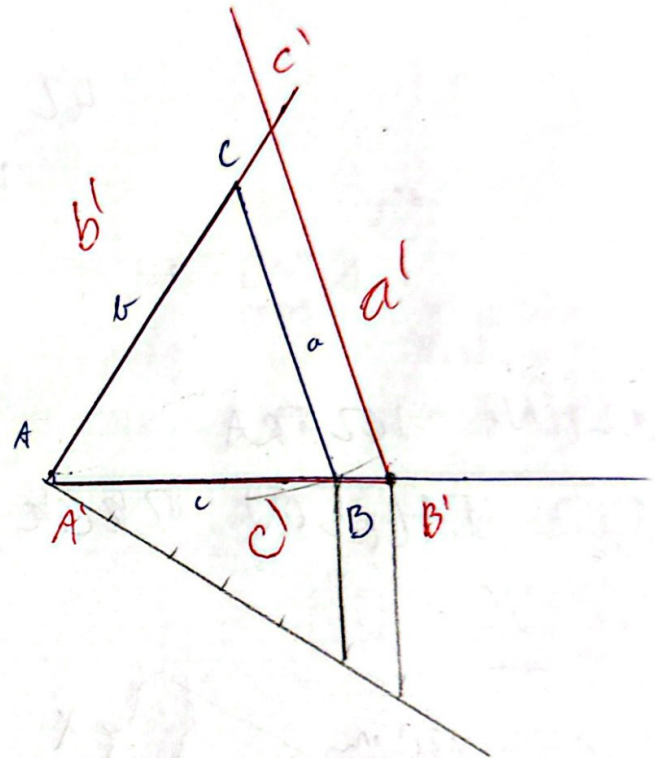
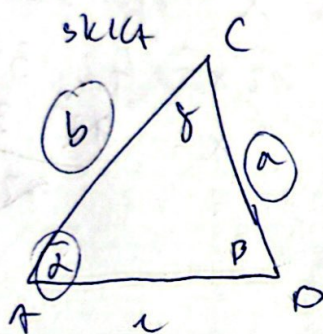
$a = 4,5 \text{ cm}$

$b = 5 \text{ cm}$

$\alpha = 60^\circ$

$c : c' = 5 : 6$

POVEČAVA



REŠITEV ZEMLJEVI D

$1: 800\,000 = x : 72$

72000 m

7200000 cm

$800000 x = 72$

$x = \frac{7200000}{800000} = 90 \text{ cm}$

REŠITEV MARKO (in palice)

a) $d : k = 30 : 18 = 5 : 3$

b) 2,4 m je krajša

2,4 je daljša

$d : 2,4 = 5 : 3$

$2,4 : x = 5 : 3$

$3d = 12$

$5x = 7,2$

$d = 4 \text{ m}$

$x = 1,44 \text{ m}$

PODOBNI KVAADRATI

$g : 16 = r_1 : r_2$

$k^2 = \frac{g}{16} \Rightarrow k = \sqrt{\frac{g}{16}} = \frac{3}{4}$

MANJŠI

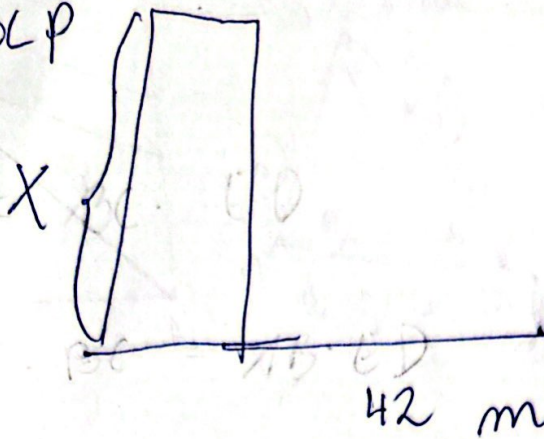
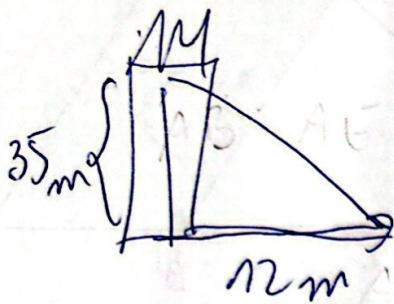
$r_1 = 25 \text{ cm} \quad a_1 = 5 \text{ cm}$

VEŠJI

$r_2 = r_1 \cdot \frac{4}{3} = 33 \frac{1}{3} \text{ cm}$

$a_2 = 5 \cdot \frac{4}{3} = \frac{20}{3} = 6 \frac{2}{3} \text{ cm}$

GRAJSKI STOLP



$$42 : X = 12 : 35$$

$$42 : X = 12 : 35$$

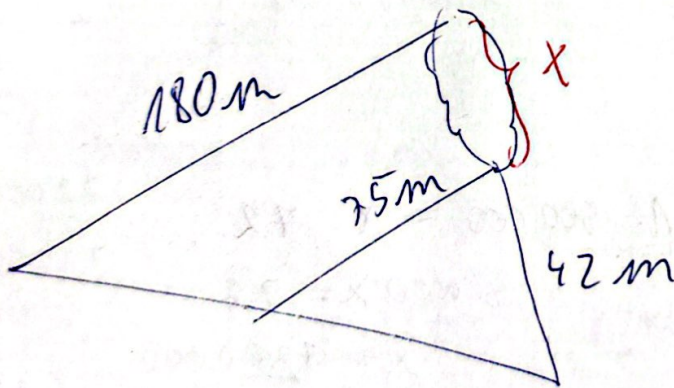
$$12X = 42 \cdot 35$$

$$X = \frac{42 \cdot 35}{12} = \frac{1245}{2} =$$

$$122,5 \text{ m}$$

DOLŽINA JAZORA

(2. TALBOV VRBEK)



$$42 : 75 = (42 + X) : 180$$

$$75 \cdot (42 + X) = 45 \cdot 180$$

$$(42 + X) = \frac{45 \cdot 180}{75} = 3 \cdot 36 =$$

$$108 \text{ m}$$

$$\underline{\underline{108 \text{ m}}}$$